

2023-2024

DOFE GLASGOW

Impact Report: Secondary Education

OFFICIAL



INTRODUCTION

DofE Glasgow License Holder and Executive Director of Education: Douglas Hutchison

“It’s a pleasure once more to say a few words at the start of this annual Duke of Edinburgh’s Award report. One of the highlights of the year for me is attending the awards ceremony in the Royal Concert Hall last November. The fact that so many young people attend with their families says a lot about how much they value their achievement through the DofE award.

DofE is one of those experiences that can be life changing for our young people. Through the expedition in particular, they learn that they have leadership skills they didn’t know they had. Some realise they are much more resilient than they expected while others have their resilience tested. Spending time away from electronic devices and home comforts can be a challenge in itself.

I am very pleased that our commitment to the DofE Award remains high and hope it can continue to flourish in all of our schools. I am very grateful to the adults who ensure young people can get the full DofE experience, both staff and volunteers. Most of all I am very proud of all our young people who manage to complete the award and wear their bronze, silver or gold badge with pride. Thanks again to everyone involved who make this possible for the young people of Glasgow.”

OFFICIAL



2021-
2022

DOUGLAS
HUTCHISON

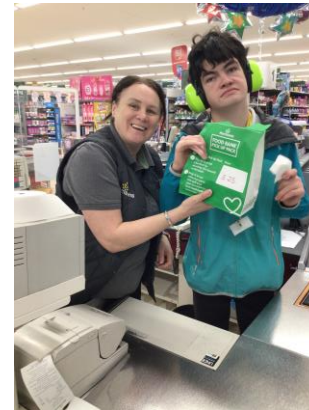
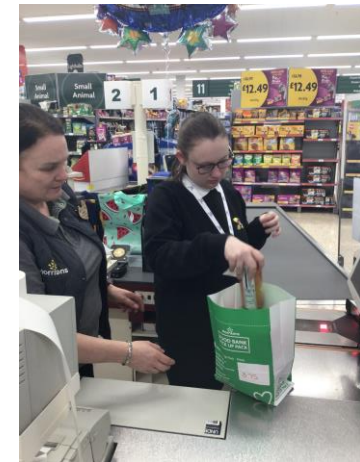


DOFE GLASGOW IN SCOTLAND



ASHTON SECONDARY

The 6th year Duke of Edinburgh pupils at Ashton Secondary school have been having a great time volunteering at Morrisons Auchinlea. Our pupils have been using pictorial shopping lists to create charity food bags. These bags are then sold in Morrisons Auchinlea! Once the items on the shopping list have been found, the pupils take turns scanning the items and placing them into the charity food bags. Once bagged, our pupils place each of their bagged goods at the front of the store. All proceeds go to food banks local to Morrisons Auchinlea and Ashton Secondary. “Mr Mann”



OFFICIAL

MARGINALISED YOUNG PEOPLE

PERCENTAGES OF ENROLMENTS



DOFE GLASGOW



DOFE SCOTLAND

PERCENTAGES OF COMPLETIONS



DOFE GLASGOW



DOFE SCOTLAND

Glasgow has the highest SIMD 1,2,3 completion of all local authorities* in Scotland

OFFICIAL

5



EASTBANK ACADEMY

VOLUNTEERING CONTRIBUTION TO THE COMMUNITY

DOFE GLASGOW

- 26,949 hours



Total Volunteering Hours
given by young people

- £142,291



Estimated total value of
volunteering hours given
in support of others

DOFE SCOTLAND

- 318,006 hours

- £1,679,072

OFFICIAL

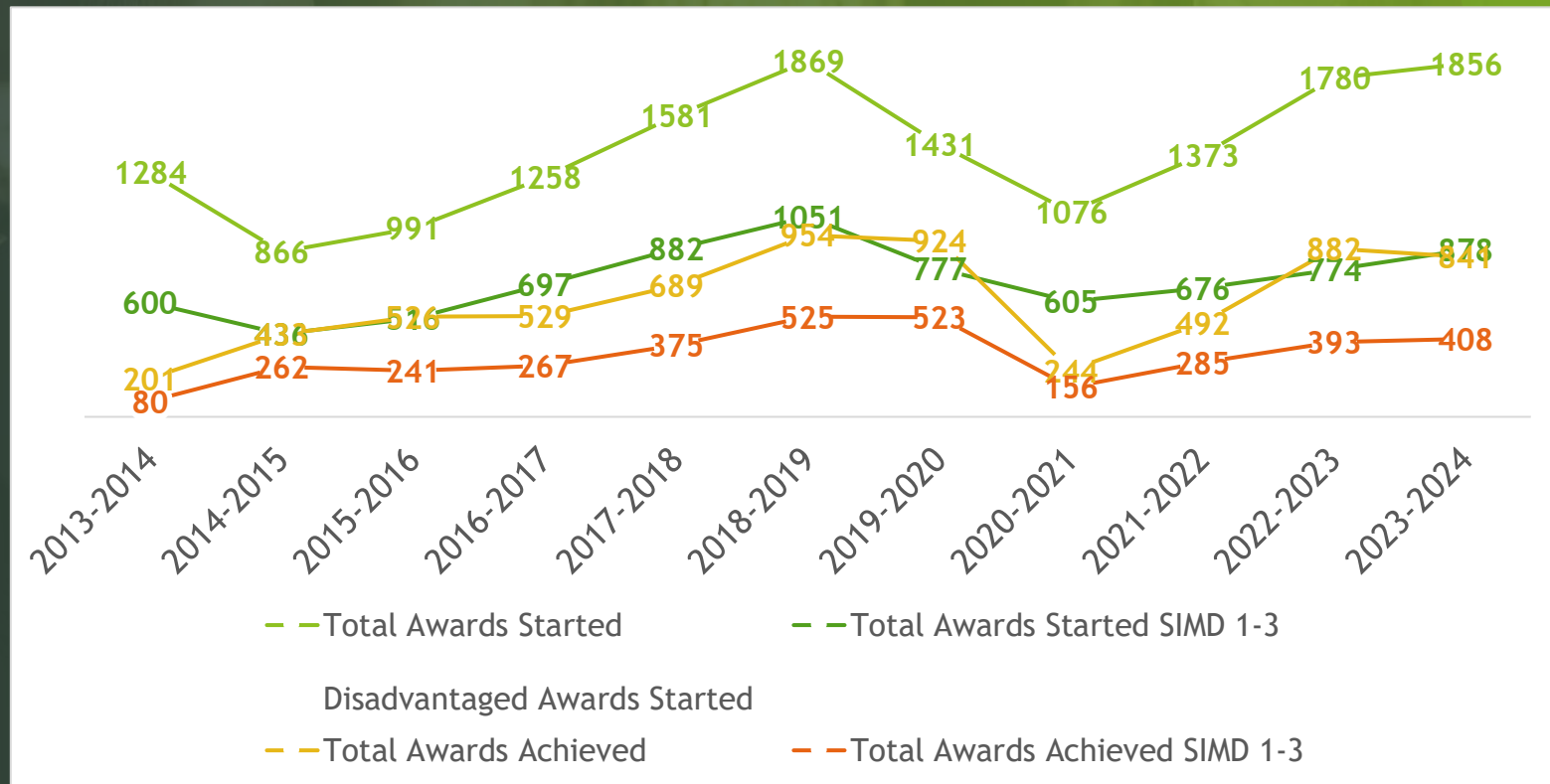
ROSSHALL SECONDARY



DofE Group Celebrating their success completing their Leave No Trace Award

OFFICIAL

10 YEAR OVERVIEW OF DOFE IN GLASGOW



EXPEDITION RELATED STATISTICS



1672 young people on
expeditions



3967 Expedition Days



2211 Additional Outdoor
days

TOP 10 WHERE ARE WE NOW?

ENROLMENTS

Centre Name	B	S	G	Total
EDU Hyndland Secondary	115	44	13	172
EDU Bannerman High	83	40	1	124
EDU Kingspark Secondary	78	18	11	107
EDU St Andrews Secondary	64	26		90
EDU Shawlands Academy	83	4	2	89
EDU Notre Dame high	62	15		77
EDU Holyrood Secondary	37	36		73
EDU St Thomas Aquinas	68	3		71
EDU Drumchapel High School	70			70
EDU Knightswood Secondary	35	16	18	69

COMPLETIONS

Centre Name	B	S	G	Total
EDU Hyndland Secondary	83	26		109
EDU Bannerman High	68	8	1	77
EDU Hillhead High School	53		10	63
EDU Notre Dame high	25	30		55
EDU Kingspark Secondary	39	12	3	54
EDU Holyrood Secondary	40	9		49
EDU Knightswood Secondary	32	13	1	46
EDU Jordanhill School	32	13		45
EDU Rosshall Academy	31			31
EDU St Thomas Aquinas	31			31



HILLPARK SECONDARY

"After all their hard work throughout the year, it was wonderful to see how well they worked together to complete their expedition" Mr MacDiarmid

TOP 10 ACHIEVEMENT RATE

Centre Name	% Achievement as 3 year average
EDU Lourdes Secondary	78.26
EDU Hillhead High School	70.90
EDU St Roch's Secondary	69.57
EDU Abercorn School	69.39
EDU Hyndland Secondary	68.37
EDU Notre Dame high	66.53
EDU Rosshall Academy	63.92
EDU Parkhill Secondary	61.22
EDU Bannerman High	57.46
EDU Lochend Community High School	57.25

KINGSPARK SECONDARY

I think the most I've learnt from DofE is to think for yourself - your equipment and body on the hike is your responsibility, and you're also working with others that you have only known for a short period of time to reach a common goal of getting your award.

I also really enjoy how everyone gets a chance to show some sort of leadership as you take turns navigating and communicating on the correct direction as you continue with the hike you learn about people's strengths, some can be good at keeping others calm during stressful situations and others are good preparing and helping others with their kit.

I have loved every hike I've done even if it was difficult at times I have amazing memories from every single one and I'm so happy I continued on with it to gold.

Thanks

Tyson S5 Student

“What I have achieved from my Gold Duke of Edinburgh is more confidence with being outdoors and more confidence Navigating around. Also it has grown my love and appreciation towards the outdoors. Further information has also opened a range of opportunities for work and has helped me get a future out of it.”

Thanks

George (Gold DofE Graduate: who due to DofE has had a successful application to Glasgow Kelvin College studying Outdoor Adventure Leadership (Level 6))

KINGSPARK SECONDARY

OFFICIAL

15

TOP 10 CENTRES FOR SIMD 1-3 ENGAGEMENT (%)

ENROLMENTS

Centre	% IMD 1-3
EDU Abercorn School	100.0
EDU Glasgow Kelvin College	100.0
EDU Parkhill Secondary	100.0
EDU St Roch's Secondary	90.9
EDU Eastbank Academy	90.3
EDU St Mungo's Academy	87.0
EDU Springburn Academy	85.7
EDU John Paul Academy	81.8
EDU All Saints Secondary	80.0
EDU Drumchapel High School LCR	80.0

COMPLETIONS

Centre	% IMD 1-3
EDU Abercorn School	100.0
EDU Cleveden Secondary (Campsie Centre)	100.0
EDU Eastbank Academy	100.0
EDU Parkhill Secondary	100.0
EDU St Margaret Mary's Secondary	100.0
EDU St Oswald's RC Secondary	100.0
EDU Lochend Community High School	88.9
EDU Smithycroft Sec	87.5
EDU St Pauls High School	87.5
EDU St Roch's Secondary	85.0

ABERCORN SECONDARY

“At Abercorn School many of our DofE participants do the Sports Leader Award for their skills section. This has proven very popular as it helps the pupils to develop many skills that are beneficial in other aspects of the DofE as well as helping prepare them for life after school. Several of the pupils then use the skills gained in the Sports Leader Award to help run extra-curricular clubs in school for the Volunteering unit when they do their Silver DofE.” David Scougall



Silver Award Participant Aiden McGreevy said ‘I really enjoyed doing the Sports Leader Award. It helped me improve my communication skills, encouraged me to take more responsibility and increased my confidence and independence. It also helped us on our expedition by being more organised with our kit and working together better as a team, especially at times that we found challenging.’

OFFICIAL

TOP 10 CENTRES FOR ASN ENGAGEMENT (%)

ENROLMENTS

Centre	% ASN
EDU Abercorn School	100.0
EDU Parkhill Secondary	100.0
EDU Drumchapel High School LCR	100.0
EDU Ashton Secondary School	100.0
EDU Hollybrook Academy	100.0
EDU Hospital Education School	100.0
EDU Hazelwood School	100.0
EDU Linburn Academy	100.0
EDU St Rochs Department of Deaf Education	100.0
EDU Whitehill Secondary	17.9

COMPLETIONS

Centre	%ASN
EDU Abercorn School	100.0
EDU Cleveden Secondary (Campsie Centre)	100.0
EDU Parkhill Secondary	100.0
EDU St Oswald's RC Secondary	100.0
EDU Hollybrook Academy	100.0
EDU Govan High LCR	100.0
EDU St Pauls High School	12.5
EDU Lochend Community High School	11.1
EDU John Paul Academy	10.0
EDU Bannerman High	9.1



PARKHILL SECONDARY

TOP 10 CENTRES FOR ASN ENGAGEMENT (%) FROM MAINSTREAM

ENROLMENTS

Centre	% ASN
EDU Whitehill Secondary	17.9
EDU Springburn Academy	14.3
EDU John Paul Academy	12.1
EDU All Saints Secondary	10.0
EDU Lochend Community High School	8.2
EDU Lourdes Secondary	6.7
EDU Bannerman High	5.6
EDU Bellahouston Academy	4.5
EDU Jordanhill School	4.5
EDU Fàilte gu Sgoil Ghàidhlig Ghlaschu	4.4

COMPLETIONS

Centre	% ASN
EDU St Pauls High School	12.5
EDU Lochend Community High School	11.1
EDU John Paul Academy	10.0
EDU Bannerman High	9.1
EDU Holyrood Secondary	8.2
EDU Hillhead High School	6.3
EDU Kingspark Secondary	5.6
EDU Hillpark Secondary	5.3
EDU Hyndland Secondary	4.6
EDU Eastbank Academy	4.3

Volunteering Section Strategies

“This year at DHS we formed a partnership with the conservation volunteers and supported by the park rangers service at GCC groups undertook work in the local Drumchapel Woods. Teams of DofE Bronze pupils picked litter from the paths and grassland along with clearing of the drainage channels along side the path to prevent paths flooding. Groups also targeted the removal of invasive plant species (Himalayan Balsam) along with excessive bracken to allow planting of wild flowers to improve local biodiversity and encourage insects.” Simon Hadfield



DRUMCHAPEL HIGH SCHOOL

Dual Accreditation

“All pupils completing their volunteering section award (or full award) have been put forward for a 10hour Saltire award. In addition a small number of pupils have worked towards the Princesses Trust Achieve award alongside a physical sectional award” Simon Hadfield

OFFICIAL

Whole School Approach

2023-2024 saw the introduction of the Bronze award on mass to S3 pupils at DHS and looking ahead this will take place again for 2024-2025, with DofE leaders taking on more organisation of the day to day running of the award and the DofE co-ordinator will then be able to offer the Silver award to S5/6 pupils with a view to offering the possibility of the Gold award in the future. Additional staff are joining the school's DofE team with suitable training.



DRUMCHAPEL HIGH SCHOOL

Staff Contribution

Mrs Bell worked with pupils to encourage personal fitness, taking them to the local gym and ensuring pupils had free access to the gym for 6 weeks.

Mr McIvor took pupils out to complete the conservation volunteering in all weathers and cleared 200m of gully path drains in Drumchapel woods

Mrs Barrowman (LCR) has supported pupils to engage with the environment, breaking down barriers and encouraging pupils to improve personal fitness through walking and exploring the local community woodlands.

TOP 10 CENTRES FOR ETHNIC MINORITY ENGAGEMENT (%)

ENROLMENTS

Centre	% ethnic minorities
EDU Virtual Gold Centre	100.0
EDU St Roch's Secondary	63.6
EDU John Paul Academy	60.6
EDU Notre Dame high	59.7
EDU St Mungo's Academy	56.5
EDU Cleveden Secondary	52.1
EDU Holyrood Secondary	50.7
EDU Ashton Secondary School	50.0
EDU Bellahouston Academy	50.0
EDU Hillhead High School	46.8

COMPLETIONS

Centre	% ethnic minorities
EDU Whitehill Secondary	80.0
EDU John Paul Academy	70.0
EDU St Roch's Secondary	70.0
EDU Bellahouston Academy	62.5
EDU Notre Dame high	61.8
EDU Holyrood Secondary	51.0
EDU Cleveden Secondary (Campsie Centre)	50.0
EDU St Pauls High School	50.0
EDU Eastbank Academy (MCR)	50.0
EDU St Andrews Secondary	46.7

PEPASS

“In terms of our first run at incorporating DofE into the Apprenticeship, I think it's enriched it and on the whole, been a positive addition. Many of our young people are already going above and beyond their work role, volunteering with various community partners outside work and looking to up skill themselves. The award recognises/compliments this as well as giving them the opportunity to take on new challenges.

In particular, the expedition part of the award has been insightful. Some MAs expressed that it was a real challenge, at times a struggle for them to complete it. 3 of the 7 strong group who took part said that it wasn't the kind of thing they would ever put themselves forward for however, they still completed it. As the group are young employees, starting their journey in the world of work, this really served as a teachable moment for them.

During feedback, we discussed how, in working life, you will always face challenges and situations you would prefer not to engage in and how developing resilience and pushing yourself out with your comfort zone are values which will serve you well for the rest of your life. Especially in the workplace where you aren't always afforded the luxury of opting in or out. I would say that overall, there was a real sense of achievement across the group” Louise Keating

PEPASS

What did the young people think of their programme?



feel the award will open me up to more opportunities in future.



The exped helps you work on mental toughness, you really have to push yourself.



The views on the expedition were amazing, it was so good to be out of the city . I loved the walk.



The exped makes you realise that when your part of a team, you just have to push on for the benefit of the team no matter how you feel about it.



Volunteering for DofE has been a really rewarding experience.



Volunteering has encouraged me to volunteer more and I'm still volunteering with my local club even though I've done everything I need to complete my hours for my award.



If it wasn't for DofE, I wouldn't be back at my karate and I'm absolutely loving being back and doing my weekend sessions.

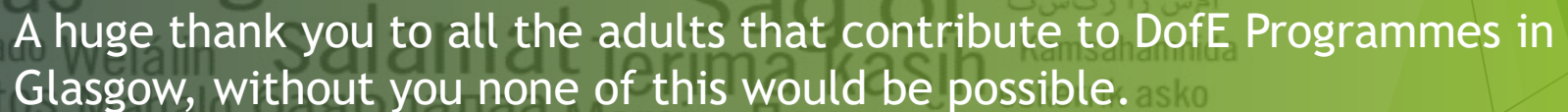
TOP 10 CENTRES FOR VOLUNTEERING CONTRIBUTION

Centre	Total hours	Value
EDU Bannerman High	2,977	£15,719
EDU Hyndland Secondary	2,327	£12,287
EDU Hillhead High School	2,210	£11,669
EDU Kingspark Secondary	1,872	£9,884
EDU Shawlands Academy	1,612	£8,511
EDU Jordanhill School	1,456	£7,688
EDU Knightswood Secondary	1,456	£7,688
EDU Holyrood Secondary	1,352	£7,139
EDU Notre Dame high	1,339	£7,070
EDU Cleveden Secondary	819	£4,324

GOLD RESIDENTIALS AT BLAIRVADACH



OFFICIAL



If you have any questions please email wiki.williams@glasgow.gov.uk

OFFICIAL